

29949

# Glycyl-L-Leucine (Gly-L-Leu)

グリシル-L-ロイシン

 $(\text{CH}_3)_2\text{CHCH}_2\text{CH}(\text{NHCOCH}_2\text{NH}_2)\text{COOH}$ 

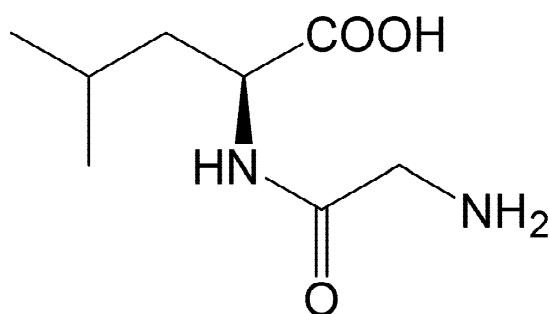
CAS RN:869-19-2

 $\text{C}_8\text{H}_{16}\text{N}_2\text{O}_3$ 

FW:188.23

## Package Size

※数量・包装サイズはご相談ください



## Specifications

Solubility in water	Colorless & clear (c=1)
Specific rotation $[\alpha]_D^{20}$	-33.5°~ -36.5°(c= 4, water)
Loss on drying	Not more than 0.5%
Residue on ignition (as sulfate)	Not more than 0.1%
Chloride (Cl)	Not more than 0.03%
Sulfate (SO <sub>4</sub> )	Not more than 0.03%
Heavy metals (as Pb)	Not more than 10ppm
Iron (Fe)	Not more than 10ppm
Other amino acids	Not detected by T.L.C. (The spotted amount, 20μg)
Assay	98.5%~101.0%