

29040

Glycyl-D-Leucine (Gly-D-Leu)

グリシル-D-ロイシン

 $(\text{CH}_3)_2\text{CHCH}_2\text{CH}(\text{NHCOCH}_2\text{NH}_2)\text{COOH}$

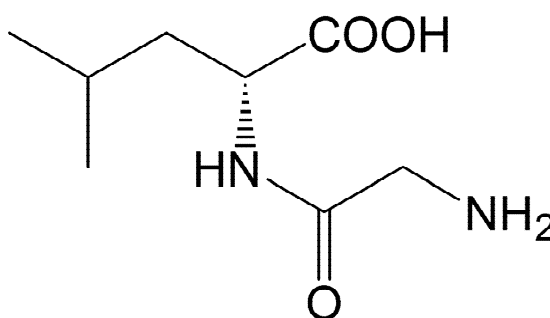
CAS RN:688-13-1

 $\text{C}_8\text{H}_{16}\text{N}_2\text{O}_3$

FW:188.23

Package Size

※数量・包装サイズはご相談ください



Specifications

Solubility in water	Colorless & clear (c=1)
Specific rotation $[\alpha]_D^{20}$	+33.5°~+36.5°(c= 4, water)
Loss on drying	Not more than 0.5%
Residue on ignition (as sulfate)	Not more than 0.1%
Chloride (Cl)	Not more than 0.03%
Sulfate (SO ₄)	Not more than 0.03%
Heavy metals (as Pb)	Not more than 10ppm
Iron (Fe)	Not more than 10ppm
Other amino acids	Not detected by T.L.C. (The spotted amount, 20μg)
Assay	98.5%~101.0%