

29831

# N-Acetyl-L-Leucine (Ac-L-Leu)

N-アセチル-L-ロイシン

$(\text{CH}_3)_2\text{CHCH}_2\text{CH}(\text{NHCOCH}_3)\text{COOH}$

CAS RN:1188-21-2

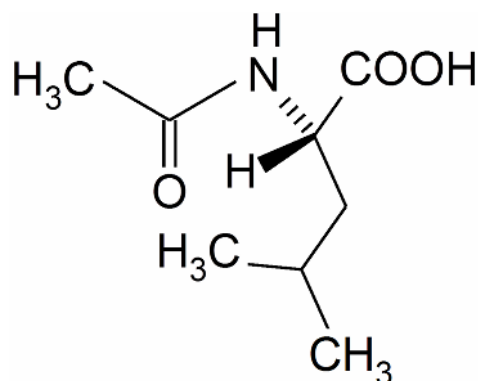
$\text{C}_8\text{H}_{15}\text{NO}_3$

FW:173.21

## Code No.

## Package Size

29832	1kg
29833	5kg
29834	10kg



## Specifications

Solubility in methanol	Colorless & clear (c=4)
Specific rotation $[\alpha]_D^{20}$	-23.2°~-25.0°(c= 4, methanol)
Loss on drying	Not more than 0.3%
Residue on ignition (as sulfate)	Not more than 0.2%
Chloride (Cl)	Not more than 0.1%
Sulfate (SO <sub>4</sub> )	Not more than 0.02%
Heavy metals (as Pb)	Not more than 10ppm
Ammonium (NH <sub>4</sub> )	Not more than 0.02%
Arsenic (As <sub>2</sub> O <sub>3</sub> )	Not more than 1ppm
Assay	98.5%~101.0%