

29691

# DL-Leucine (DL-Leu)

DL-ロイシン

 $(\text{CH}_3)_2\text{CHCH}_2\text{CH}(\text{NH}_2)\text{COOH}$ 

CAS RN:328-39-2

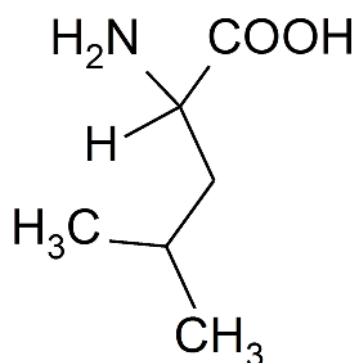
 $\text{C}_6\text{H}_{13}\text{NO}_2$ 

FW:131.17

## Code No.

## Package Size

29692	1kg
29693	5kg
29694	10kg
29690	25kg



## Specifications

Solubility in 3M-HCl	Colorless & clear (c=5)
Loss on drying	Not more than 0.3%
Residue on ignition (as sulfate)	Not more than 0.1%
Chloride (Cl)	Not more than 0.03%
Sulfate (SO <sub>4</sub> )	Not more than 0.03%
Heavy metals (as Pb)	Not more than 10ppm
Iron (Fe)	Not more than 10ppm
Ammonium (NH <sub>4</sub> )	Not more than 0.02%
Arsenic (As <sub>2</sub> O <sub>3</sub> )	Not more than 1ppm
Other amino acids	Not detected by T.L.C. (The spotted amount, 50μg)
Assay	98.5%~101.0%