

29471

# D-Leucine (D-Leu)

D-ロイシン

 $(\text{CH}_3)_2\text{CHCH}_2\text{CH}(\text{NH}_2)\text{COOH}$ 

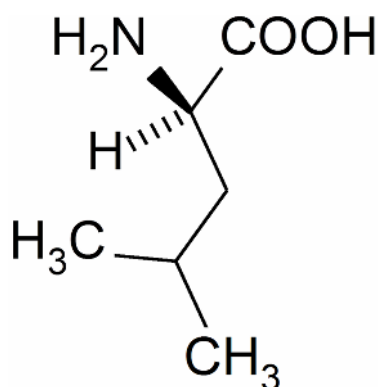
CAS RN:328-38-1

 $\text{C}_6\text{H}_{13}\text{NO}_2$ 

FW:131.17

**Code No.****Package Size**

29472	1kg
29473	5kg
29474	10kg
29429	25kg

**Specifications**

Solubility in 3M-HCl	Colorless & clear (c=5)
Specific rotation $[\alpha]_D^{20}$	-14.8°~-15.7°(c=4, 6M-HCl)
Loss on drying	Not more than 0.3%
Residue on ignition (as sulfate)	Not more than 0.1%
Chloride (Cl)	Not more than 0.02%
Sulfate (SO <sub>4</sub> )	Not more than 0.03%
Heavy metals (as Pb)	Not more than 10ppm
Iron (Fe)	Not more than 10ppm
Ammonium (NH <sub>4</sub> )	Not more than 0.02%
Arsenic (As <sub>2</sub> O <sub>3</sub> )	Not more than 1ppm
Other amino acids	Not detected by T.L.C. (The spotted amount, 50μg)
Assay	98.5%~101.0%
L-Isomer	Not more than 0.5%