

29020

# Glycyl- $\beta$ -Alanine (Gly- $\beta$ -Ala)

グリシル- $\beta$ -アラニン

$\text{H}_2\text{NCH}_2\text{CONHCH}_2\text{CH}_2\text{COOH}$

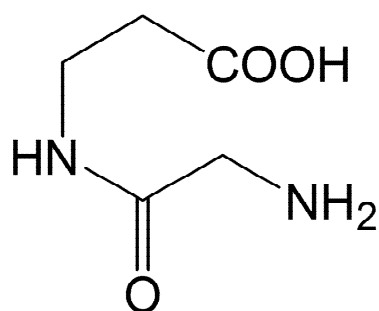
CAS RN:7536-21-2

$\text{C}_5\text{H}_{10}\text{N}_2\text{O}_3$

FW:146.14

## Package Size

※数量・包装サイズはご相談ください



## Specifications

Solubility in water	Colorless & clear (c=1)
Loss on drying	Not more than 0.3%
Chloride (Cl)	Not more than 0.03%
Other amino acids	Not detected by T.L.C. (The spotted amount, 20 $\mu$ g)
Assay	Not less than 98.0%